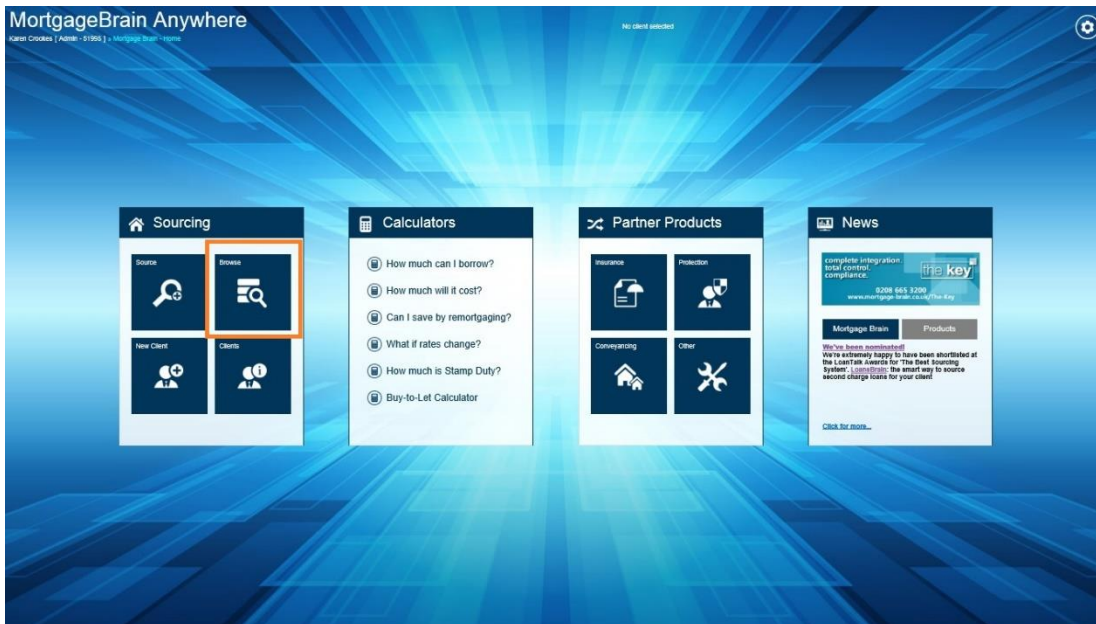


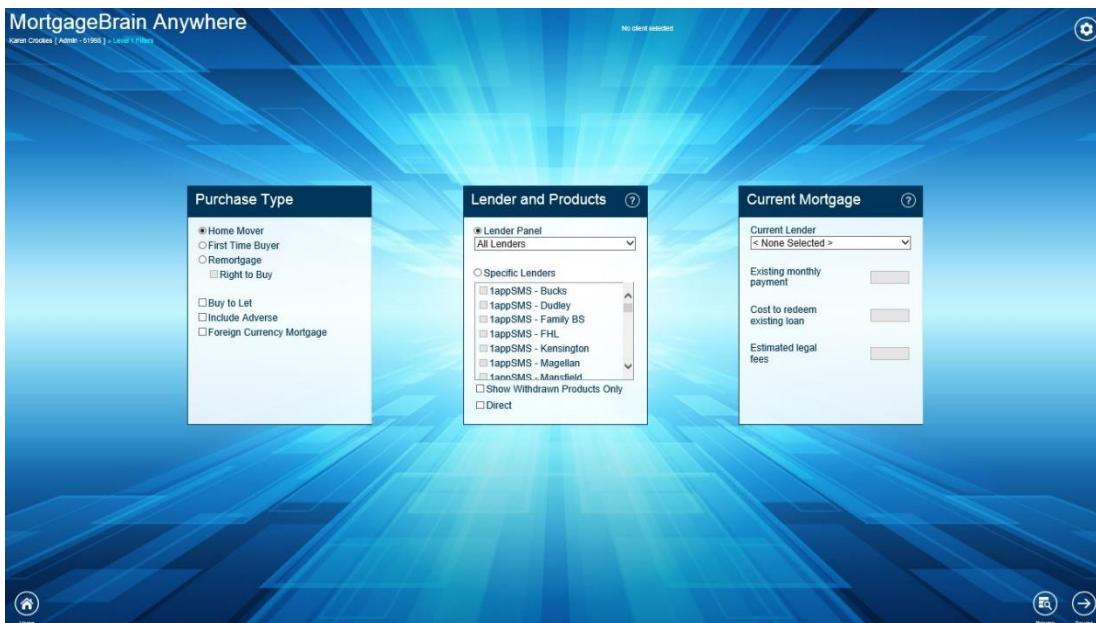
## Browse

MortgageBrain Anywhere has a feature which allows the ability to browse mortgage products within the sourcing software prior to carrying out a full source for clients.

To browse mortgage products, there is no requirement to enter any client data initially. To access the browse feature, simply click/tap on the button (highlighted) from the Home screen.

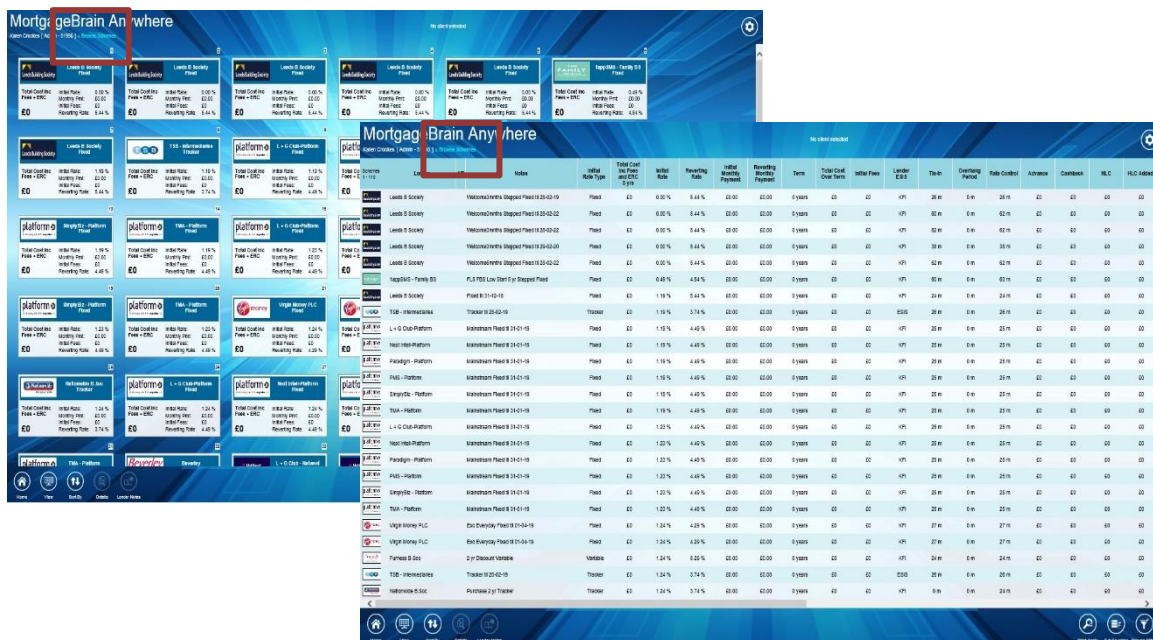


Select the initial criteria by choosing your client's purchase type and the lender panel or specific lenders if desired. Once chosen, click or tap on the Browse button.



By choosing the Browse option, you will bypass all of the other filter tiles and go straight to the scheme list.

The scheme list displays all products available based on the initial criteria applied. When in this mode, the screen displays the words Browse mode in the top left hand corner.



When initially displaying schemes in browse mode, some information will be hidden. These items are those that need data to allow calculations to be made, such as valuation fees. Once data has been entered and applied to the schemes displayed, then this information will automatically become visible.

Only one 'browse' screen can be displayed. If you wish to switch to sourcing from browse, simply click on the Full Sourcing button. This will take you back to the Sourcing tab, where all client data, mortgage data and full filters can be applied.

A KFI needs certain data items to ensure that it is produced correctly. Therefore, within Browse, you will not see the option to produce a KFI.

**NOTE: It is considered best practice to produce a KFI in Source mode rather than Browse mode as more filtering would have been applied to the product selection.**

There is an option to browse with a specified client. Select the client first and then go into the Browse function. Any filters previously applied to the client will be carried through in Browse mode therefore browsing only schemes applicable for the client.