

Settings Functionality

MortgageBrain Anywhere allows the ability to customise some of the settings contained within it. This customisation includes:

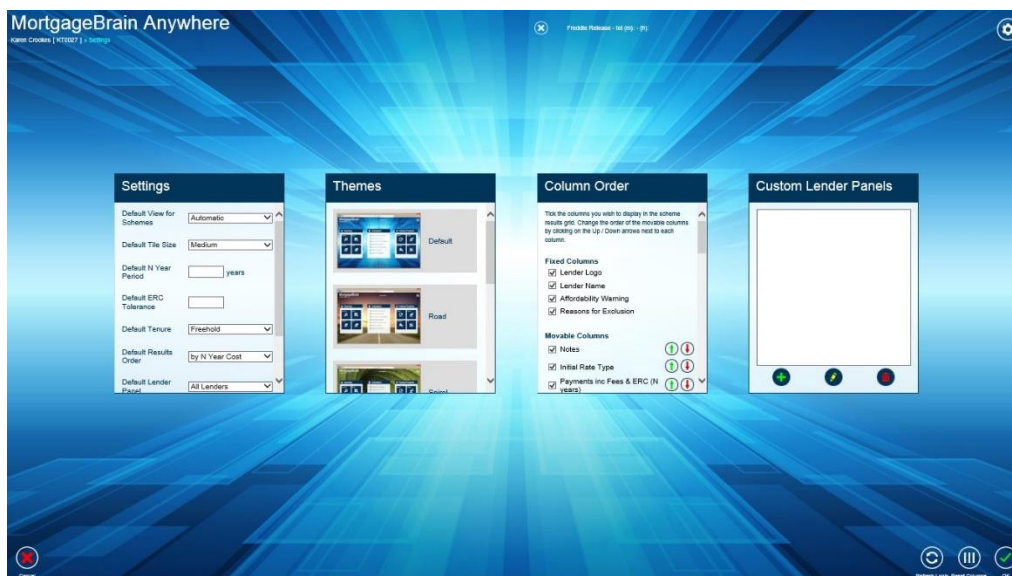
- Lender panel setup
- Column order and column display (within the scheme results window)
- Second charge sourcing default options
- Print options, allowing columns and selected number of schemes to be printed on one page
- Country setting
- Sort by column order within the scheme list and other default settings

The Settings function can be accessed from multiple areas within the software. Where ever you see the **Cog** icon in the top right hand side of the screen, this will provide access to Settings.

The screenshot displays the MortgageBrain Anywhere software interface. At the top, the title 'MortgageBrain Anywhere' is visible. Below the title, there is a navigation bar with various icons. The main area contains a table of mortgage schemes. The table has the following columns: Lender, A/R, Notes, Initial Rate Type, Payments (Inc Fees and EPC 2 yrs), Interest, Fees and EPC 2 yrs, Initial Rate, Final Rate, Initial Monthly Payment, Final Monthly Payment, Term, Total Cost Over Term, Initial Fees, Final Fee, Lender E/S, Trxn, Overhand Period, Rate Control, and Advance. The table lists various mortgage products from lenders like Halifax, FirstCompass, and Nationwide. In the top right corner of the interface, there is a settings cog icon.

Setting Options

Having opened up the Settings function, you will see the ability, within each of the tiles, to change a number of features within the software.



The **Settings** tile provides a variety of functions as shown on the screenshot above. Key options in this tile include:

- Default view for schemes – this can be either the classic grid view or a tile view
- Default tile size – small, medium or large
- Default N year period – this can be overridden during the sourcing stage but a standard default can be displayed
- Default ERC tolerance – this currently defaults to 2 months, but this can be controlled in the settings
- Default tenure
- Default results order – how the scheme results are initially ordered when sourcing
- Default lender panel – only applicable to brokers who have access to any panel setting
- Default country – if only broking in certain areas of the UK, this setting can be applied

The **Themes** tile offers the ability to change the background picture if required.

The **Column Order** tile provides the option to change the column order within the scheme list and switch off columns if not required.

The **Custom Lender Panel** tile provides the functionality to set up additional lender panels. Note that this function is only available to brokers who do not have default lender panels pre-set by their network.

NOTE: after amending any of the Settings, you may need to apply the changes by logging out and logging back in to ensure that the changes you have chosen are applied.

END