

MortgageBrain Classic Installation Guide

Important Notes

This document describes the installation process for MortgageBrain Classic in a standalone workstation mode.

A reboot may be required after the MortgageBrain Classic installation has been completed.

Minimum Software Pre-requisites

Processor: Intel Core 2 Duo 2.0GHz or comparable

Memory: 3 GB

Hard Disk Space: 10 GB

Screen Resolution: 1024 x 768

Operating System: Windows Vista

2 Mb/s Download Speed

Recommended Software Pre-requisites

Intel Core i3 2.4GHz or comparable

Memory: 4 GB

Hard Disk Space: 10 GB+

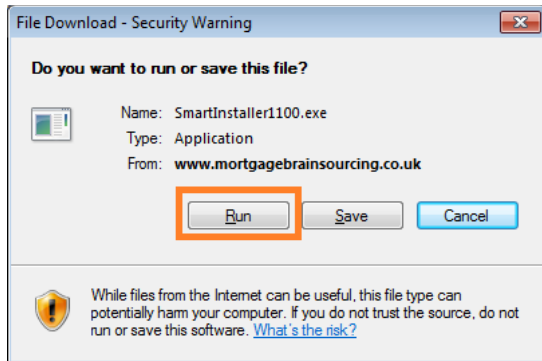
Screen Resolution: 1366 x 768

Operating System: Windows 7/8 64bit

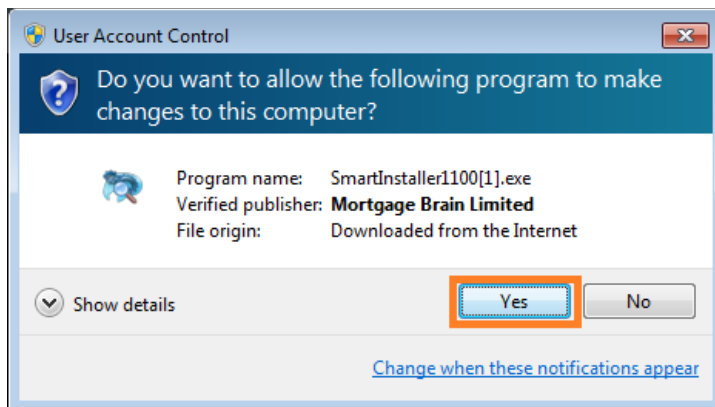
4 Mb/s Download Speed

Starting your Installation

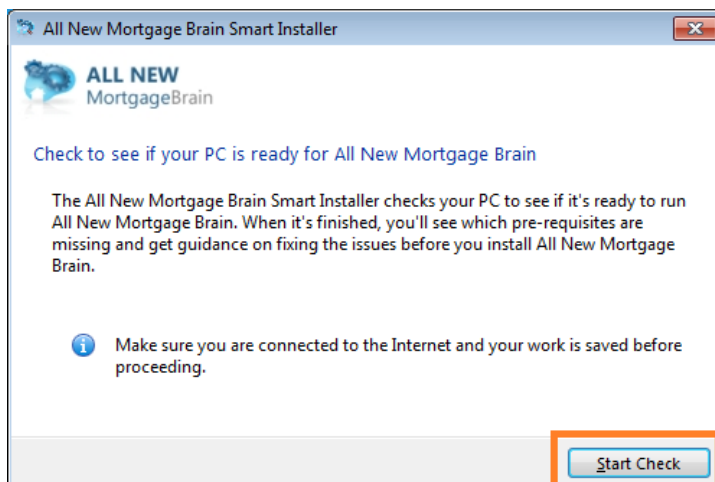
Once the link to download MortgageBrain Classic is selected, click **Run**. This will download the MortgageBrain Classic Smart Installer.



If the following screen appears, click **Yes** to continue.



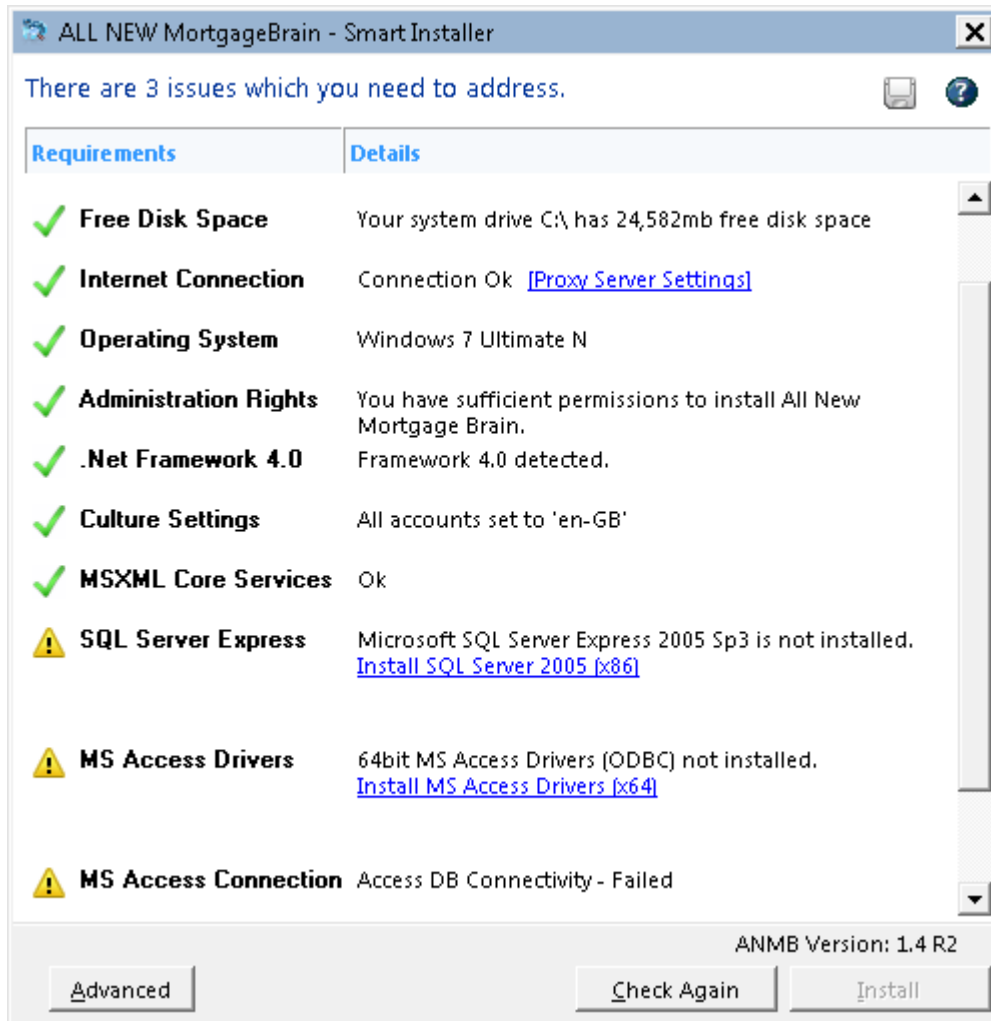
The following screen should appear. Click **Start Check** to run the Smart Installer.



Smart Installer Checks

The Smart Installer will run before downloading MortgageBrain Classic to ensure all minimum system and software requirements have been met.

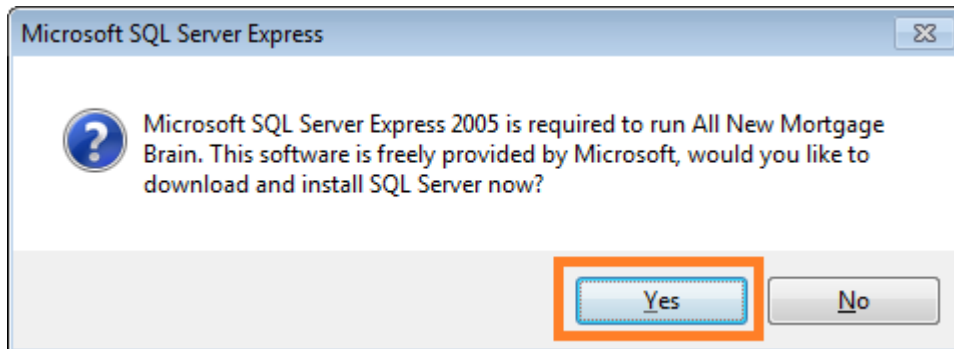
When Smart Installer first runs, it is usual to have some issues to address.



If there are issues to address, as in the above screenshot, Smart Installer will assist you. The most common issues are SQL Server Express and Microsoft Access Drivers not being installed.

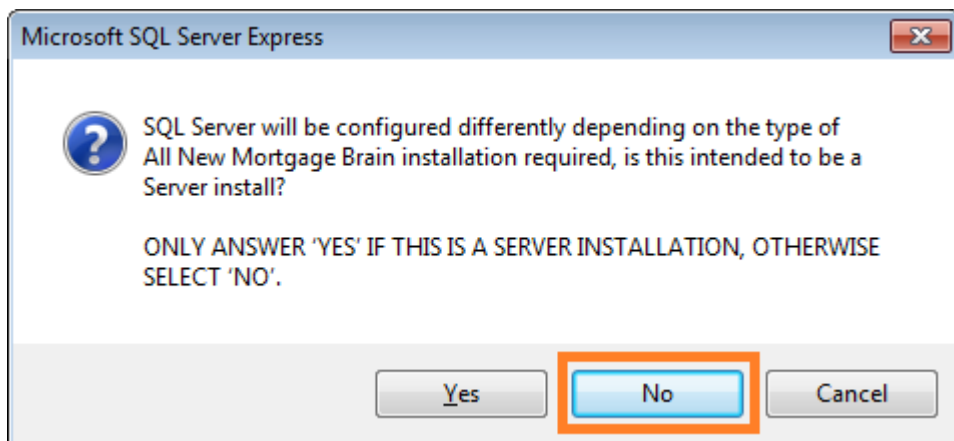
To install SQL Server Express, first click the blue link on the Smart Installer screen titled **Install SQL Server 2005 (x86)**. For Windows 8 users, this link will read **Install SQL Server 2012 (x64)**.

When the link to install SQL Server Express is clicked, the following message will appear. Click **Yes** to continue.

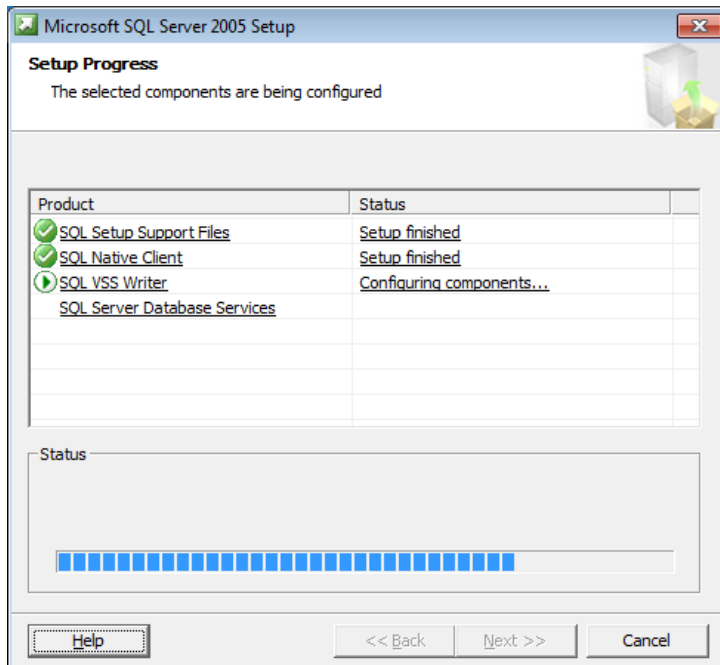


Smart Installer will then download SQL Server Express. The time this takes will depend on your internet connection speed.

Once SQL Server Express has been downloaded the following message will appear. Click **No** to continue.

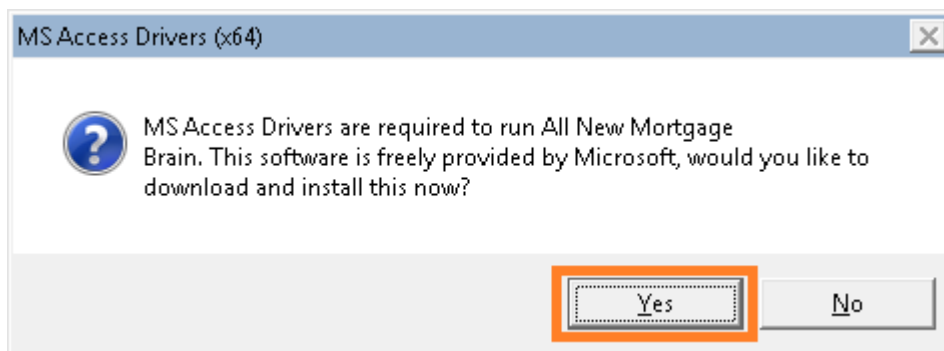


SQL Server Express will then be installed, with no further input required.



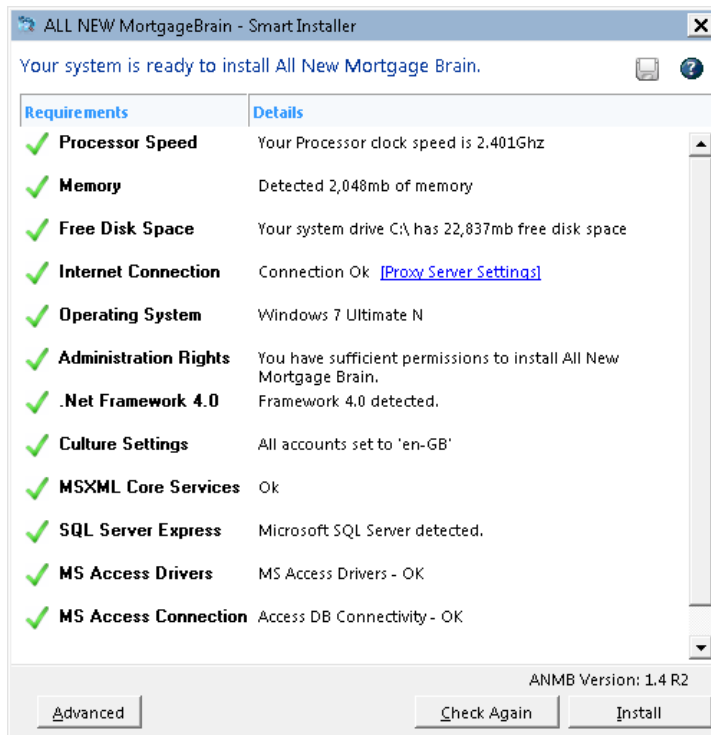
To install the Microsoft Access Drivers, first click the blue link on the Smart Installer screen titled **Install MS Access Drivers (x64)**. Please note: this option will not be available to computers running 32-bit editions of Windows.

When the link to install the Access Drivers is clicked, the following message will appear. Click **Yes** to continue.



Smart Installer will then download and automatically install the Access Drivers. The time this takes will depend on your internet connection speed.

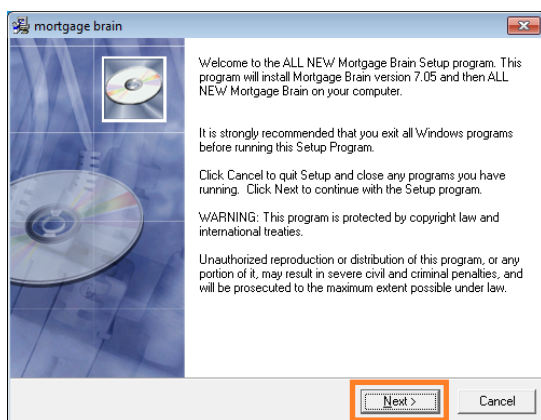
Once all issues identified by the Smart Installer have been resolved, MortgageBrain Classic is ready to be installed. To do this, click the **Install** button.



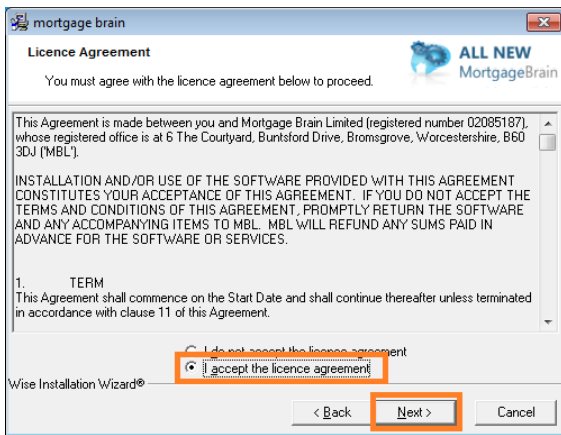
Smart Installer will then download the installation files required for MortgageBrain Classic. The time this takes will depend on your internet connection speed.

Installing ALL NEW MortgageBrain

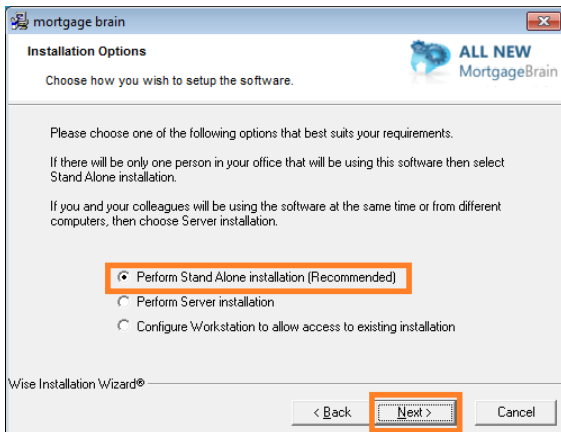
Once the installation files for MortgageBrain Classic have been downloaded, the install wizard will appear. Click **Next** to continue.



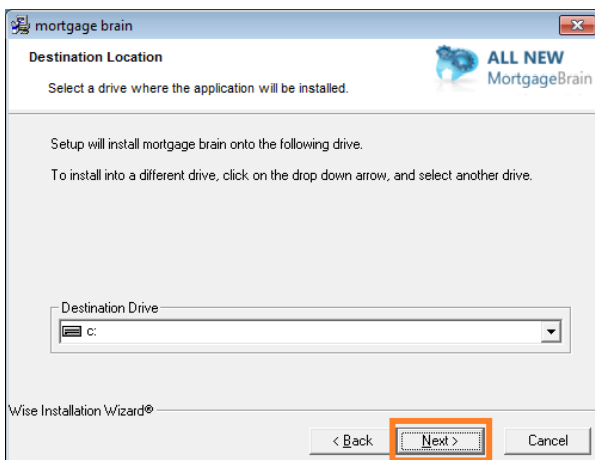
The Terms and Conditions must be **Accepted** to proceed. Click **Next** to continue.



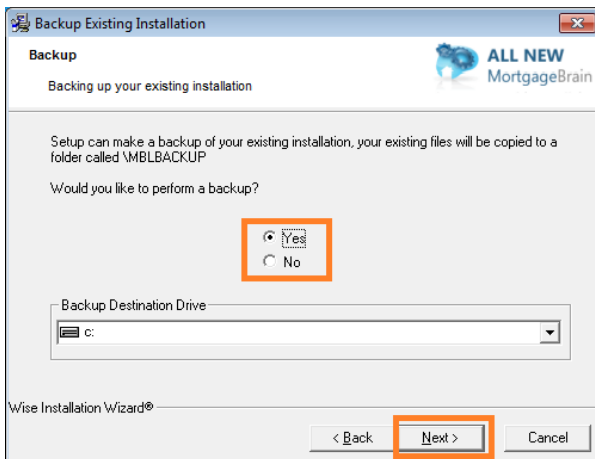
In the below screen, make sure **Perform Stand Alone Installation (Recommended)** is selected. Click **Next** to continue.



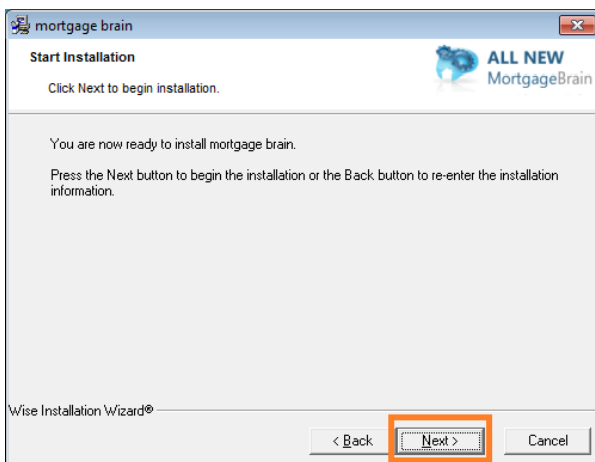
Select the Destination Drive for **ALL NEW** MortgageBrain. Click **Next** to continue.



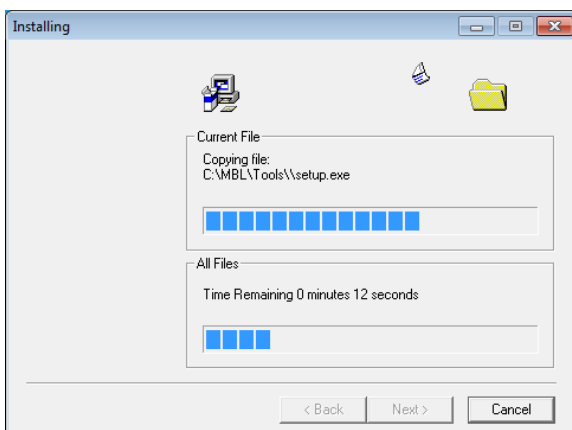
If MortgageBrain Classic has been previously installed on the computer, the installer will ask if a backup is required. The default option is **Yes**. Click **Next** to continue.



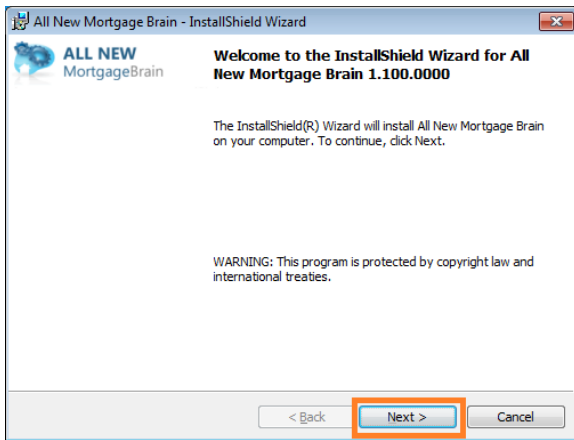
MortgageBrain Classic is now ready to be installed. Click **Next** to continue.



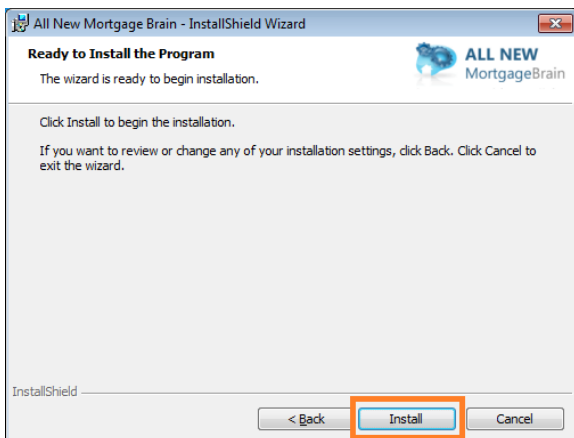
While the installation is taking place, the following screen will give an indication of how long it will take.



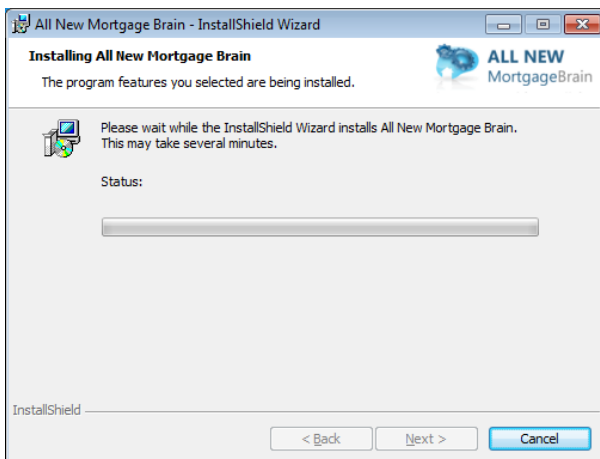
Once the above process has completed, the following screen will appear to start the second stage of the installation. Click **Next** to continue.



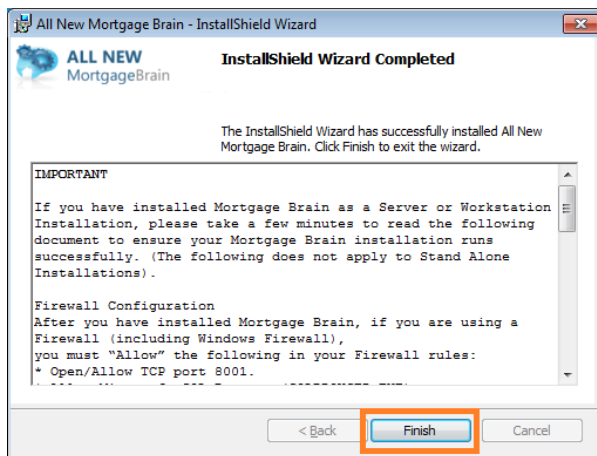
The second stage of the MortgageBrain Classic installation is now ready to start. Click **Install** to continue.



While the installation is taking place, the following screen will give an indication of how long it will take.



Once the installation has completed, click **Finish**.



MortgageBrain Classic is now installed on your computer.

Please contact Customer Services on **0871 384 0194** to licence the software as required.

Please take advantage of our **free one-to-one training sessions**. Simply go to the Mortgage Brain website, www.mortgage-brain.co.uk and click on the 'Help & Training' tab and then 'MortgageBrain Classic Webinar Training' and select two sessions that are convenient for you. Alternatively, if you would like any help or assistance, you can call Customer Services on **0871 384 0194**.