

The Key Installation Guide

This guide covers the installation and registration of the Key.

Important Notes

This document describes the installation process for the Key.

A reboot may be required after the Key installation has been completed.

Please note that users with versions of Windows that are no longer supported by Microsoft will see a prompt to that effect each time they log in to the system.

Minimum Software Pre-requisites

Processor: Dual core 1.6GHz

RAM: 3 GB of System Memory

Free HD: 1 GB

Upload Speed: 0.5mBit/s

Download Speed: 2mBit/s

Operating System: Microsoft Windows 7 or later

Screen Resolution: 1024 x 768

Screen Density: 96ppi Only

Recommended Software Pre-requisites

Processor: Intel Core i3 2.4GHz or comparable processor

RAM: 4 GB or greater of system memory

Free HD: 10 GB

Upload Speed: 2mBit/s

Download Speed: 8mBit/s

Operating System: Microsoft Windows 7/8.1/10 – 64 bit

Screen Resolution: 1366 x 768

Screen Density: 96ppi Only

Notes:

- Microsoft Excel is required for some reports
- Office365 supported with locally installed versions

- The Key operates on an Apple machine running Boot Camp or emulation through Parallels (NOT in coherence mode); the requirements for that are outlined separately.

The Key (Mac OS running Parallels – NOT in coherence mode) Requirements

Processor: Intel i5 2.8GHz or comparable processor

RAM: 6 GB or greater of system memory

Free HD: 10 GB (SSD recommended)

Upload Speed: Minimum of 2mBit/s

Download Speed: Minimum of 4mBit/s

Operating System: Microsoft Windows 7 or later (Parallels Desktop 11 required for Windows 10 support)

Screen Resolution: 1024 x 768, 16 bit

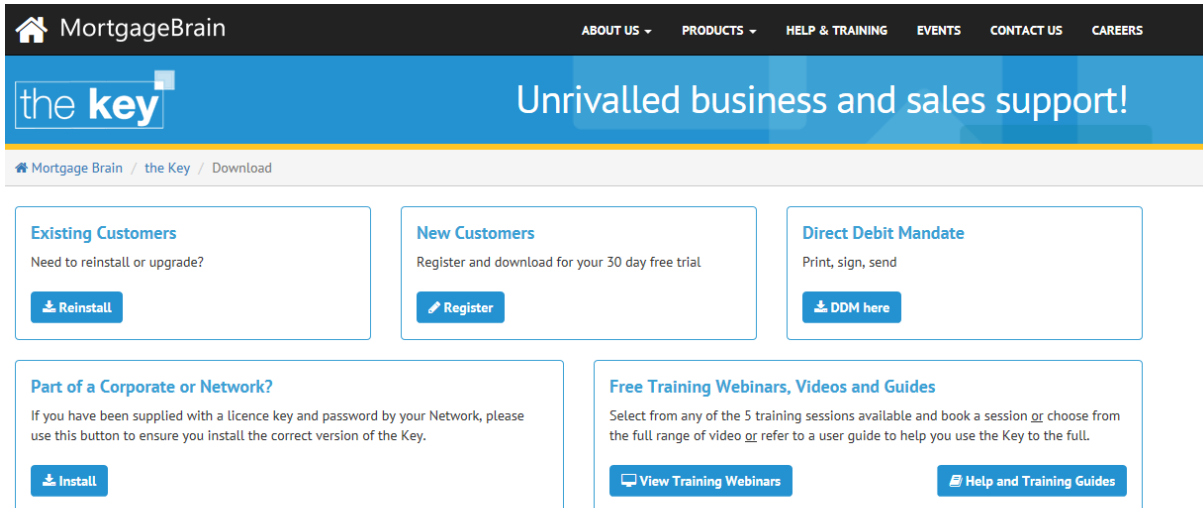
Screen Density: 96ppi Only

Notes:

- Microsoft .NET 4.0 is required
- **All requirements should be checked against those published by Parallels**

Downloading the Software

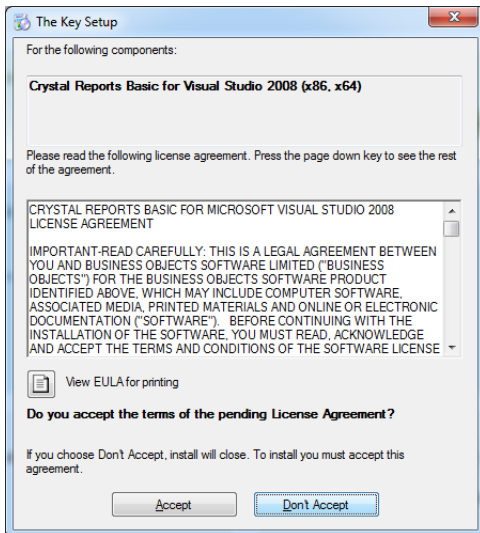
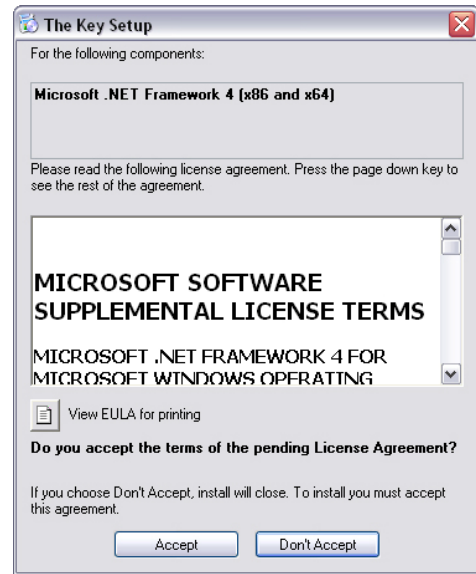
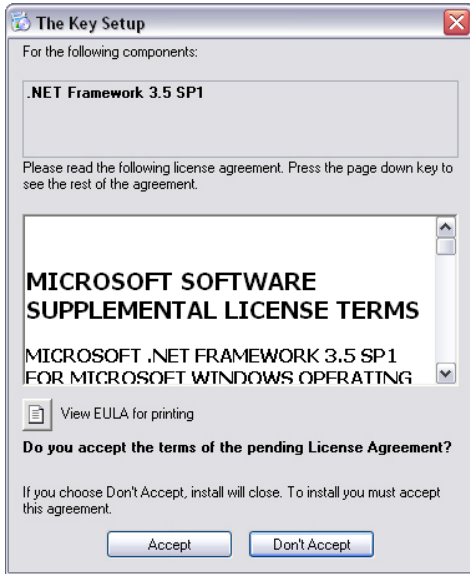
The software can be found at www.mortgage-brain.co.uk/The-Key/Download.aspx, as shown below:



For registered users clicking the 'Reinstall' button will download a copy of the setup.exe file required to install the Key. New users will need to register prior to installation, using the form shown above. Once registration is complete a link to download the same setup.exe file will be made available.

Installing the Key

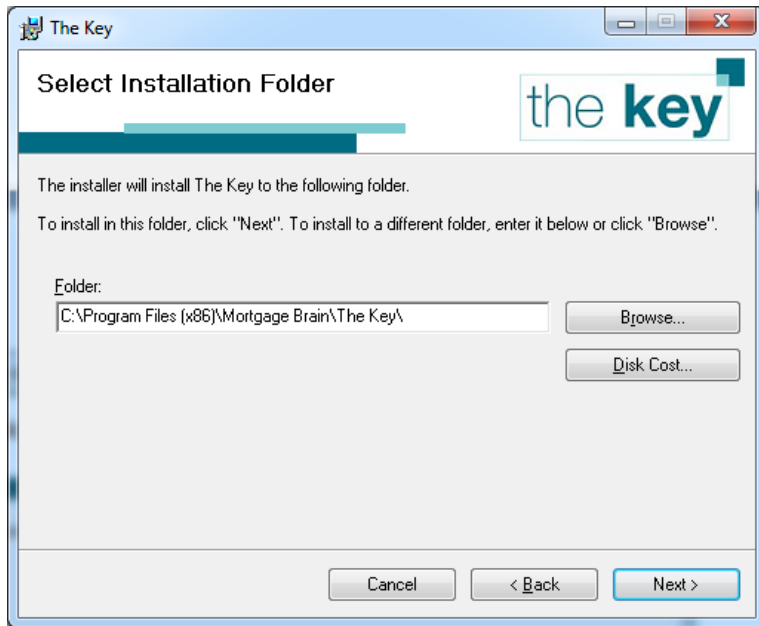
The installation process can be run by double-clicking the setup.exe file downloaded above. At this point the installation routine will check to ensure that all necessary applications are installed – this means the appropriate version of .NET and Crystal Reports. If any of these items are not already installed then one or more of the following messages may be displayed. In each case, click on 'Accept' to install that piece of software.



Once all of the pre-requisite elements have been installed, the Key Setup Wizard will launch.



Navigate through the Wizard using the 'Next' button. Initially the Wizard will confirm the location where the Key will be installed.

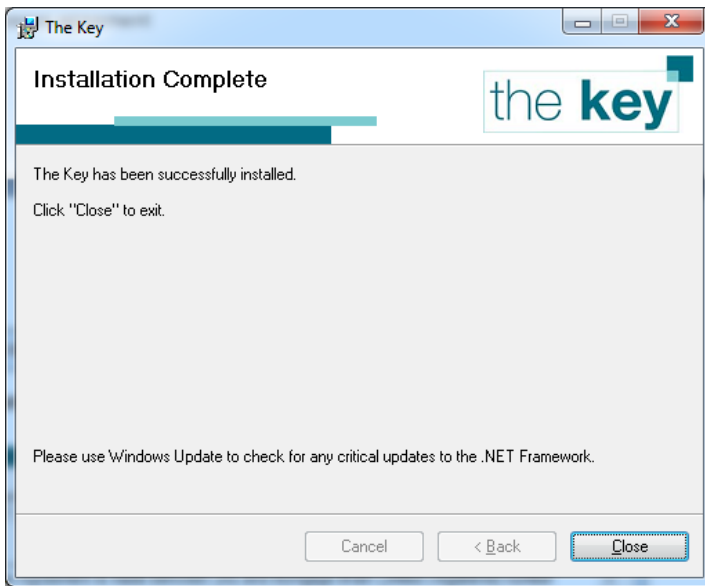


Note: Users of 32-bit Windows will not see the '(x86)' text

The next screen displays the licence agreement:



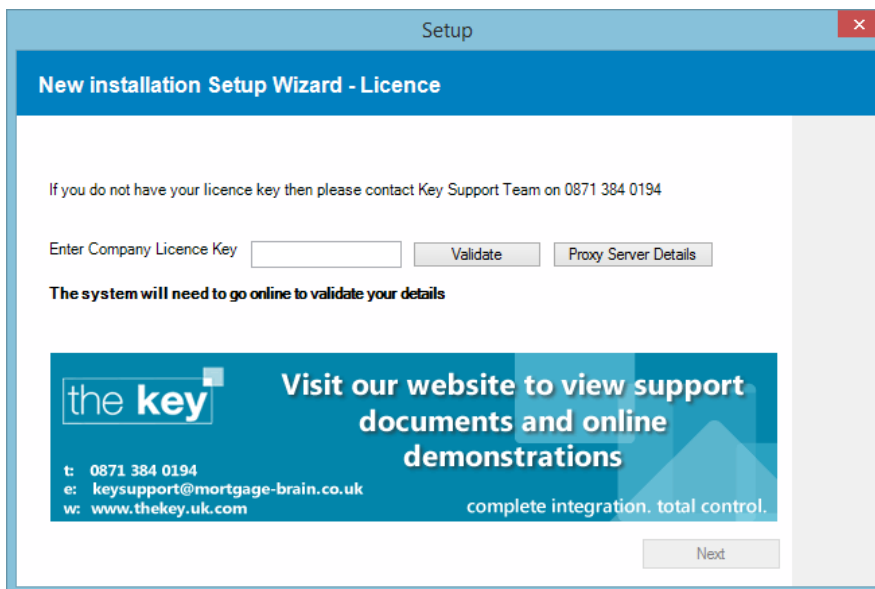
Select 'I Agree' and click 'Next' to continue. This will start the installation process, and a successful completion is shown by the following window which will be displayed.



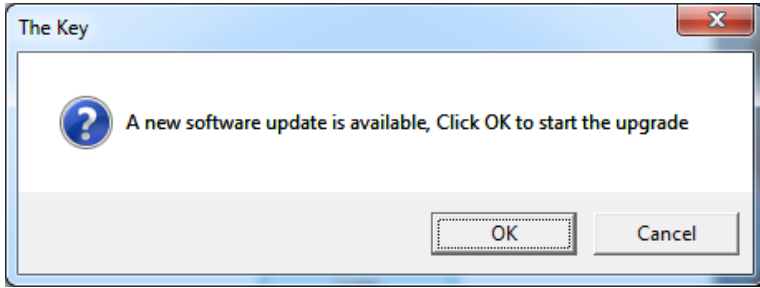
Click Close to end the Setup Wizard.

First Launch of the Key

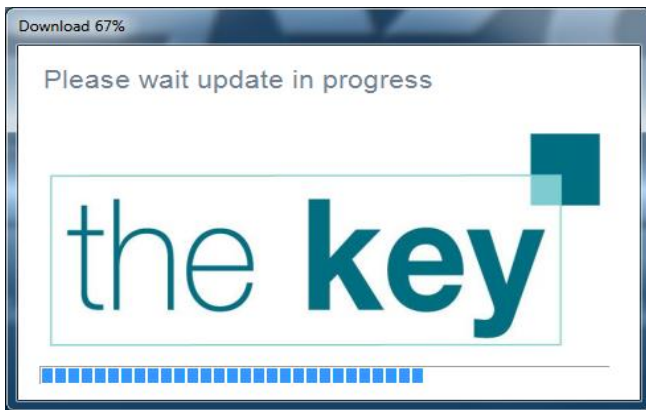
When the Key is first launched after a fresh installation, a dialogue box will appear requesting the licence key. This is sent out as part of the company's registration process.



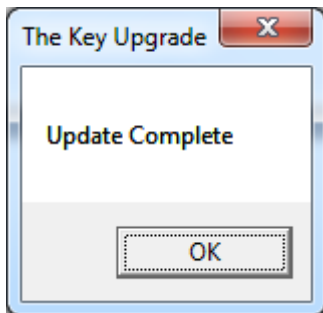
Upon entering the licence key, click Next. This will initiate a check for any updates to the Key that have been made since the setup files were created. There will usually be an initial update to the Key, and this will also include any corporate customisations if appropriate.



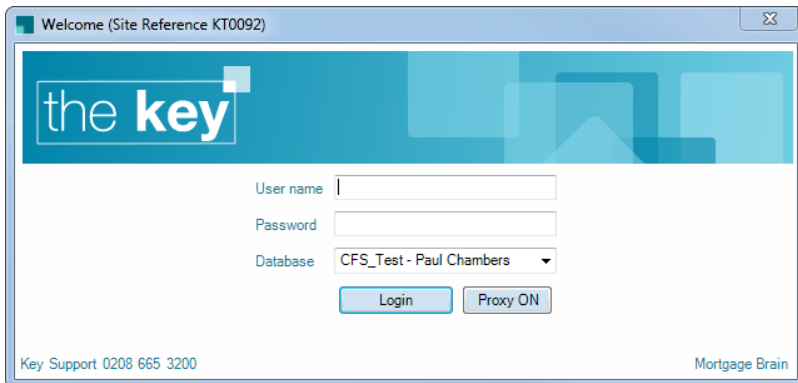
Clicking on OK will start the update, and progress is monitored in the dialogue box that is displayed.



Once the update is completed, a confirmation window is displayed.



Upon clicking on OK, the standard Key login box will be displayed.



The Key has now been installed and is ready for use.